



## Husqvarna PG 540

The PG 540 (3 hp / 2.2 kW) is a single phase, compact and versatile planetary floor grinder, perfect for smaller jobs. It combines a smart compact design for easy transportation with real work-horse performance and sheer grinding power. Thanks to the split-chassis design, the PG 540 fits in most standard cars. It's easy to handle, tilt and operate with optional adjustable weights for extra grinding pressure. Suitable for all applications: floor prep, grinding and polishing. The PG 540 is the compact choice for the HIPERFLOOR™ concrete polishing system. To maximise reliability and reduce maintenance, the vital components of the PG 540 are protected against dust and slurry inside the hermetically sealed grinding head and electrical cabinet.

### Motor

|                   |           |
|-------------------|-----------|
| Rated input power | 2.2 kW    |
| Rated current     | 13 A      |
| Voltage           | 200-240 V |
| Phases            | 1         |
| Pins              | 2P+E      |

### Other

|                          |                 |
|--------------------------|-----------------|
| Grinding disc diameter   | 230 mm          |
| Direction of rotation    | Both directions |
| Number of grinding discs | 3               |

### Dimensions

|                     |         |
|---------------------|---------|
| Product size length | 1015 mm |
| Product size width  | 560 mm  |
| Product size height | 735 mm  |
| Weight              | 169 kg  |

## Articles for PG 540

Husqvarna PG 540

967 97 74-05

## Features for PG 540

### Adjustable grinding pressure



The optional weights are a must-have for every professional grinder, as they allow to adjust the grinding pressure in three pre-set positions. They also make tilting the machine that much easier.

### Sealed to last



Sealed grinding head with 1000 hrs service interval. No dust or water can intrude to damage components.

### Protected electronics



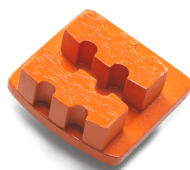
Dust sealed electrical cabinet with external cooling technology.

### Hour and RPM meter

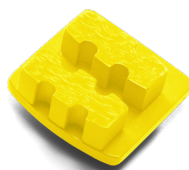


Possibility to log operating hours and read the RPM of the machine.

## Recommended tools for PG 540



G1410 3 PCS



G1420 3PCS



G1440 3PCS



G1470 3PCS



G1480 3PCS

|                            | G1410 3 PCS | G1420 3PCS | G1440 3PCS | G1470 3PCS | G1480 3PCS |
|----------------------------|-------------|------------|------------|------------|------------|
| Concrete hard              | ● ● ●       | ● ● ●      | ● ○ ○      |            |            |
| Concrete medium            |             | ● ○ ○      | ● ● ○      | ● ○ ○      |            |
| Concrete soft              |             |            |            | ● ● ●      | ● ● ○      |
| Paint and thin epoxy       | ● ○ ○       | ● ● ○      | ● ● ●      | ● ○ ○      | ● ○ ○      |
| Plastic-like ceramic glues |             | ● ○ ○      | ● ● ●      |            |            |
| Porous ceramic glues       |             |            |            | ● ● ●      | ● ● ○      |

|                        |       |       |       |       |       |
|------------------------|-------|-------|-------|-------|-------|
| Rain-damaged concrete  |       |       |       | ● ● ○ | ● ● ● |
| Semi-polished concrete | ● ● ● | ● ○ ○ |       |       |       |
| Thick epoxy            | ● ○ ○ | ● ○ ○ | ● ● ● | ● ○ ○ |       |
| Vinyl glues            | ● ○ ○ | ● ● ○ | ● ● ● | ● ○ ○ | ● ○ ○ |



**G11X1**



**HiperFlex FP40**



**HiperFlex FP80**

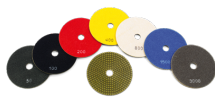


**HiperFlex FT80**

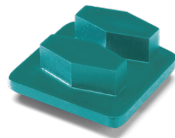


**CP 1200 series**

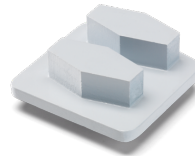
|                            |       |       |       |       |       |
|----------------------------|-------|-------|-------|-------|-------|
| Concrete                   |       | ● ● ● |       | ● ● ● |       |
| Concrete hard              |       | ● ● ● |       |       | ● ● ○ |
| Concrete medium            |       | ● ● ○ |       | ● ● ○ | ● ● ● |
| Concrete soft              | ● ○ ○ |       |       | ● ● ● | ● ● ○ |
| Marble                     |       |       | ● ● ● |       |       |
| Paint and thin epoxy       | ● ● ● | ● ● ○ |       |       |       |
| Plastic-like ceramic glues | ● ● ● | ● ● ○ |       |       |       |
| Porous ceramic glues       | ● ● ● |       |       |       |       |
| Terrazzo                   |       |       | ● ● ● | ● ● ● |       |
| Vinyl glues                |       | ● ● ● |       |       |       |



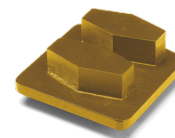
**P1200 series for handheld machines**



**VARI-GRIND G620 3PCS**



**VARI-GRIND G640 3PCS**



**VARI-GRIND G670 3PCS**

|                            |       |       |       |       |
|----------------------------|-------|-------|-------|-------|
| Concrete hard              | ● ● ○ | ● ● ● | ● ○ ○ |       |
| Concrete medium            | ● ● ● | ● ○ ○ | ● ● ● | ● ○ ○ |
| Concrete soft              | ● ● ○ |       | ● ● ○ | ● ● ● |
| Paint and thin epoxy       |       | ● ● ○ | ● ● ● | ● ○ ○ |
| Plastic-like ceramic glues |       | ● ○ ○ | ● ● ● | ● ● ● |
| Porous ceramic glues       |       |       |       | ● ● ● |
| Rain-damaged concrete      |       |       | ● ○ ○ | ● ○ ○ |
| Semi-polished concrete     |       | ● ○ ○ |       |       |
| Thick epoxy                |       | ● ○ ○ | ● ● ● | ● ○ ○ |
| Vinyl glues                |       | ● ● ○ | ● ● ● | ● ○ ○ |