



Husqvarna PG 540

The PG 540 (5.5 hp / 4.0 kW) is a powerful, compact and versatile planetary floor grinder perfect for smaller jobs. Available in both single phase and three phase. It combines a smart compact design for easy transportation with real work-horse performance and sheer grinding power. Thanks to the split-chassis design, the PG 540 fits in most standard cars. It's easy to handle, tilt and operate with optional adjustable weights for extra grinding pressure. Suitable for all applications: floor prep, grinding and polishing. The PG 540 is the compact choice for the HIPERFLOOR™ concrete polishing system. To maximise reliability and reduce maintenance, the vital components of the PG 540 are protected against dust and slurry inside the hermetically sealed grinding head and electrical cabinet.

Motor

Rated input power	4 kW
Rated current	16 A
Voltage	380-415 V
Phases	3
Pins	3P+E

Other

Grinding disc diameter	230 mm
Direction of rotation	Both directions
Number of grinding discs	3

Dimensions

Product size length	1015 mm
Product size width	560 mm
Product size height	735 mm
Weight	178 kg

Articles for PG 540

Husqvarna PG 540

967 97 74-01

Features for PG 540

Adjustable grinding pressure



The optional weights are a must-have for every professional grinder, as they allow to adjust the grinding pressure in three pre-set positions. They also make tilting the machine that much easier.

Sealed to last



Sealed grinding head with 1000 hrs service interval. No dust or water can intrude to damage components.

Protected electronics



Dust sealed electrical cabinet with external cooling technology.

Hour and RPM meter



Possibility to log operating hours and read the RPM of the machine.

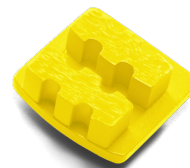
Recommended tools for PG 540



G11X1



G1410 3 PCS



G1420 3PCS



G1440 3PCS



G1470 3PCS

Concrete hard		● ● ●	● ● ●	● ○ ○	
Concrete medium			● ○ ○	● ● ○	● ○ ○
Concrete soft	● ○ ○				● ● ●
Paint and thin epoxy	● ● ●	● ○ ○	● ● ○	● ● ●	● ○ ○
Plastic-like ceramic glues	● ● ●		● ○ ○	● ● ●	
Porous ceramic glues	● ● ●				● ● ●

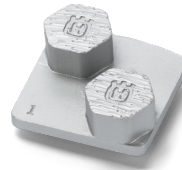
Rain-damaged concrete					● ● ○
Semi-polished concrete		● ● ●	● ○ ○		
Thick epoxy		● ○ ○	● ○ ○	● ● ●	● ○ ○
Vinyl glues		● ○ ○	● ● ○	● ● ●	● ○ ○



G1480 3PCS



P1200 series for PG machines



SharX™



HiperFlex FP40



HiperFlex FP80

Concrete				● ● ●	
Concrete hard		● ● ○	● ● ●	● ● ●	
Concrete medium		● ● ●		● ● ○	
Concrete soft	● ● ○	● ● ○			
Marble					● ● ●
Paint and thin epoxy	● ○ ○			● ● ○	
Plastic-like ceramic glues				● ● ○	
Porous ceramic glues	● ● ○				
Rain-damaged concrete	● ● ●				
Semi-polished concrete			● ● ●		
Terrazzo		● ○ ○			● ● ●
Vinyl glues	● ○ ○			● ● ●	



HiperFlex FT80



CP 1200 series

Concrete	● ● ●	
Concrete hard		● ● ○
Concrete medium	● ● ○	● ● ●
Concrete soft	● ● ●	● ● ○
Terrazzo	● ● ●	