



## Husqvarna PG 680

The PG 680 concrete floor grinder is an excellent choice for both industrial and commercial applications. With a grinding width of 680 mm it easily fits through a standard door making it accessible to most job sites without sacrificing power. The planetary drive system and Dual Drive Technology™ gives PG 680 an outstanding removal rate. Excellent choice for concrete floor preparation and repair as well as all polishing and grinding applications – both wet and dry. Perfect for HiPERFLOOR® concrete floor polishing system.

### Motor

Rated input power	12.5 kW
Rated current	27 A
Voltage	380-480 V
Phases	3 ph
Pins	5-pin
Frequency	50 Hz

### Dimensions

Product size length	1260 mm
Product size width	700 mm
Product size height	1220 mm
Weight	400 kg

### Other

Grinding width	680 mm
Grinding disc diameter	230 mm
Grinding disc speed min	300 rpm
Grinding disc speed max	1200 rpm
Grinding pressure, max	269 kg
Direction of rotation	Independent FWD/REV direction control on both grinding discs and planetary head.
Number of grinding discs	3

## Features for PG 680

### Best in class



Outstanding productivity and reliability.

### Dual Drive Technology™



Dual Drive Technology™ – fully independent control of both planetary and satellite grinding heads in regards to speed and direction of rotation.

### High production rate



High power machinery with Dual Drive Technology™ capable of delivering high production rates, increasing profit and saving valuable time.

### Gear-driven planetary head



Gear-driven planetary head; premium quality belt for powering grinding heads.

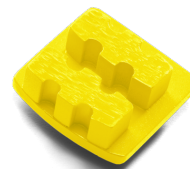
## Recommended tools for PG 680



**G11X1**



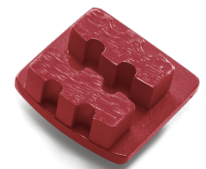
**G1410 3 PCS**



**G1420 3PCS**



**G1440 3PCS**

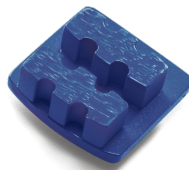


**G1470 3PCS**

Concrete hard		● ● ●	● ● ●	● ○ ○	
Concrete medium			● ○ ○	● ● ○	● ○ ○
Concrete soft	● ○ ○				● ● ●
Paint and thin epoxy	● ● ●	● ○ ○	● ● ○	● ● ●	● ○ ○
Plastic-like ceramic glues	● ● ●		● ○ ○	● ● ●	
Porous ceramic glues	● ● ●				● ● ●
Rain-damaged concrete					● ● ○
Semi-polished concrete		● ● ●	● ○ ○		
Thick epoxy		● ○ ○	● ○ ○	● ● ●	● ○ ○
Vinyl glues		● ○ ○	● ● ○	● ● ●	● ○ ○



**BHT 230**



**G1480 3PCS**



**HiperFlex FP40**

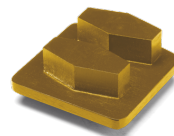
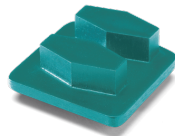
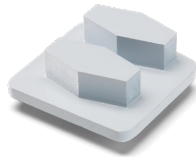


**HiperFlex FP80**



**HiperFlex FT80**

Concrete			● ● ●		● ● ●
Concrete hard	● ● ●		● ● ●		
Concrete medium	● ● ●		● ● ○		● ● ○
Concrete soft	● ● ●	● ● ○			● ● ●
Marble				● ● ●	
Paint and thin epoxy	● ● ●	● ○ ○	● ● ○		
Plastic-like ceramic glues	● ● ●		● ● ○		
Porous ceramic glues	● ● ●	● ● ○			
Rain-damaged concrete	● ● ●	● ● ●			
Semi-polished concrete	● ● ●				
Terrazzo				● ● ●	● ● ●
Thick epoxy	● ● ●				
Vinyl glues	● ● ●	● ○ ○	● ● ●		



**VARI-GRIND G640  
3PCS**

**VARI-GRIND G620  
3PCS**

**VARI-GRIND G670  
3PCS**

**CP 1200 series**

**P1200 series for PG  
machines**

Concrete hard	● ○ ○	● ● ●		● ● ○	● ● ○
Concrete medium	● ● ●	● ○ ○	● ○ ○	● ● ●	● ● ●
Concrete soft	● ● ○		● ● ●	● ● ○	● ● ○
Paint and thin epoxy	● ● ●	● ● ○	● ○ ○		
Plastic-like ceramic glues	● ● ●	● ○ ○	● ● ●		
Porous ceramic glues			● ● ●		
Rain-damaged concrete	● ○ ○		● ○ ○		
Semi-polished concrete		● ○ ○			
Terrazzo					● ○ ○
Thick epoxy	● ● ●	● ○ ○	● ○ ○		
Vinyl glues	● ● ●	● ● ○	● ○ ○		