



Husqvarna PG 680 RC

PG 680 RC is a remote-controlled concrete floor grinder with unique oscillation function and Dual Drive Technology™. Compared to standard floor grinders this remote-controlled grinder enables significantly higher productivity and even better work results together with more ergonomic operation and effortless transportation to and from the work site. It also frees you to prepare the next set of tools, adjust hoses etc while the machine is running, which means better use of your time. With a grinding width of 680 mm it easily passes through a standard door. It's suitable for industrial applications and an excellent choice for concrete floor preparation and repair as well as all polishing and grinding applications – both wet and dry. Perfect for HiPERFLOOR® concrete floor polishing system.

Motor

Rated input power	13 kW
Rated current	28 A
Voltage	380-480 V
Phases	3 ph
Pins	5-pin
Frequency	50 Hz

Dimensions

Product size length	1260 mm
Weight	500 kg

Other

Grinding width	680 mm
Grinding disc diameter	230 mm
Grinding disc speed min	300 rpm
Grinding disc speed max	1200 rpm
Grinding pressure, max	275 kg
Direction of rotation	Independent FWD/REV direction control on both grinding discs and planetary head.
Number of grinding discs	3

Articles for PG 680 RC

Husqvarna PG 680 RC

967 62 27-01

Features for PG 680 RC

Increased productivity with remote control



Higher output as optimum grinding parameters can be maintained over time. More grinding hours per day since you can operate and prepare next steps simultaneously. For example you can apply GM 3000 with a broom at the same time as you run the machine.

Unique function for flatter floors



Replication of manual grinding movements (oscillation), gives best possible grinding pattern by adjusting amplitude and frequency. Gives a flatter floor by eliminating so called ridges otherwise created between passes. At the same time, the oscillation function saves time for the operator, as you only have to go over the floor once with the machine, instead of using the cross hatching technique.

Dual Drive Technology™



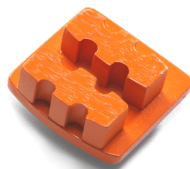
Dual Drive Technology™ – fully independent control of both planetary and satellite grinding heads in regards to speed and direction of rotation.

Consistent optimum grinding performance

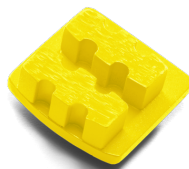


Parameter settings enables optimum grinding and polishing for each application. Consistent operation and result, even when changing operator.

Recommended tools for PG 680 RC



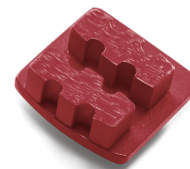
G1410 3 PCS



G1420 3PCS



G1440 3PCS



G1470 3PCS



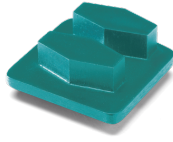
BHT 230

Concrete hard	● ● ●	● ● ●	● ○ ○	● ● ●	● ● ●
Concrete medium		● ○ ○	● ● ○	● ○ ○	● ● ●
Concrete soft				● ● ●	● ● ●

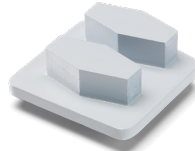
Paint and thin epoxy	● ○ ○	● ● ○	● ● ●	● ○ ○	● ● ●
Plastic-like ceramic glues		● ○ ○	● ● ●		● ● ●
Porous ceramic glues				● ● ●	● ● ●
Rain-damaged concrete				● ● ○	● ● ●
Semi-polished concrete	● ● ●	● ○ ○			● ● ●
Thick epoxy	● ○ ○	● ○ ○	● ● ●	● ○ ○	● ● ●
Vinyl glues	● ○ ○	● ● ○	● ● ●	● ○ ○	● ● ●



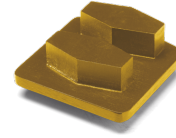
G1480 3PCS



VARI-GRIND G620 3PCS



VARI-GRIND G640 3PCS

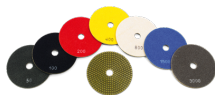


VARI-GRIND G670 3PCS



P1200 Polishing Pads

Concrete					● ● ●
Concrete hard		● ● ●	● ○ ○		
Concrete medium		● ○ ○	● ● ●	● ○ ○	
Concrete soft	● ● ○		● ● ○	● ● ●	
Paint and thin epoxy	● ○ ○	● ● ○	● ● ●	● ○ ○	
Plastic-like ceramic glues		● ○ ○	● ● ●	● ● ●	
Porous ceramic glues	● ● ○			● ● ●	
Rain-damaged concrete	● ● ●		● ○ ○	● ○ ○	
Semi-polished concrete		● ○ ○			
Thick epoxy		● ○ ○	● ● ●	● ○ ○	
Vinyl glues	● ○ ○	● ● ○	● ● ●	● ○ ○	



P1200 series for handheld machines



G11X1



SharX™



CP 1200 series



P1200 series for PG machines

Concrete hard	● ● ○		● ● ●	● ● ○	● ● ○
Concrete medium	● ● ●			● ● ●	● ● ●
Concrete soft	● ● ○	● ○ ○		● ● ○	● ● ○
Paint and thin epoxy		● ● ●			
Plastic-like ceramic glues		● ● ●			
Porous ceramic glues		● ● ●			
Semi-polished concrete			● ● ●		
Terrazzo					● ○ ○