



Husqvarna PG 830 S

PG 830 S grinder focus on core grinding performance. It is a single motor version of the largest floor grinder size in the Husqvarna PG-range. This is a good choice for most grinding jobs, and for users that prefer a non-motorised drive. The PG 830 S is easy to use, still with large capacity thanks to the 32 in / 830 mm grinding width. Adjustable weights for extra grinding pressure are optional. Key components are sealed against dust and slurry for maximised reliability and low maintenance.

Motor

| | |
|-------------------|-----------|
| Rated input power | 11 kW |
| Rated current | 30 A |
| Voltage | 380-415 V |
| Phases | 3 |
| Pins | 3P+E |

Other

| | |
|--------------------------|-----------------|
| Grinding disc diameter | 270 mm |
| Direction of rotation | Both directions |
| Number of grinding discs | 3 |

Dimensions

| | |
|---------------------|---------|
| Product size length | 1550 mm |
| Product size width | 830 mm |
| Product size height | 1145 mm |
| Weight | 497 kg |

Articles for PG 830 S

Features for PG 830 S

Sealed to last



Sealed grinding head with 1000 hrs service interval. No dust or water can intrude to damage components.

Adjustable grinding pressure



The optional weights are a must-have for every professional grinder, as they allow to adjust the grinding pressure in three pre-set positions. They also make tilting the machine that much easier.

Ergonomic handle



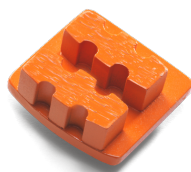
Adjustable handle for better ergonomics.

Protected electronics



Dust sealed electrical cabinet with external cooling technology.

Recommended tools for PG 830 S



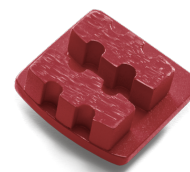
G1410 3 PCS



G1420 3PCS



G1440 3PCS



G1470 3PCS



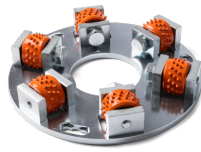
G1480 3PCS

| | | | | | |
|----------------------------|-------|-------|-------|-------|-------|
| Concrete hard | ● ● ● | ● ● ● | ● ○ ○ | | |
| Concrete medium | | ● ○ ○ | ● ● ○ | ● ○ ○ | |
| Concrete soft | | | | ● ● ● | ● ● ○ |
| Paint and thin epoxy | ● ○ ○ | ● ● ○ | ● ● ● | ● ○ ○ | ● ○ ○ |
| Plastic-like ceramic glues | | ● ○ ○ | ● ● ● | | |
| Porous ceramic glues | | | | ● ● ● | ● ● ○ |

| | | | | | |
|------------------------|-------|-------|-------|-------|-------|
| Rain-damaged concrete | | | | ● ● ○ | ● ● ● |
| Semi-polished concrete | ● ● ● | ● ○ ○ | | | |
| Thick epoxy | ● ○ ○ | ● ○ ○ | ● ● ● | ● ○ ○ | |
| Vinyl glues | ● ○ ○ | ● ● ○ | ● ● ● | ● ○ ○ | ● ○ ○ |



P1200 series for PG machines



BHT 270



CP 1200 series



HiperFlex FP40



HiperFlex FP80

| | | | | | |
|----------------------------|-------|-------|-------|-------|-------|
| Concrete | | | | ● ● ● | |
| Concrete hard | ● ● ○ | ● ● ● | ● ● ○ | ● ● ● | |
| Concrete medium | ● ● ● | ● ● ● | ● ● ● | ● ● ○ | |
| Concrete soft | ● ● ○ | ● ● ● | ● ● ○ | | |
| Marble | | | | | ● ● ● |
| Paint and thin epoxy | | ● ● ● | | ● ● ○ | |
| Plastic-like ceramic glues | | ● ● ● | | ● ● ○ | |
| Porous ceramic glues | | ● ● ● | | | |
| Rain-damaged concrete | | ● ● ● | | | |
| Semi-polished concrete | | ● ● ● | | | |
| Terrazzo | ● ○ ○ | | | | ● ● ● |
| Thick epoxy | | ● ● ● | | | |
| Vinyl glues | | ● ● ● | | ● ● ● | |



HiperFlex FT80

| | |
|-----------------|-------|
| Concrete | ● ● ● |
| Concrete medium | ● ● ○ |
| Concrete soft | ● ● ● |
| Terrazzo | ● ● ● |