



Husqvarna BMP 265

BMP 265 scarifier is powered by an electric motor and is ideal for medium and large-sized applications. This machine benefits from an ergonomic design. The braking system with a steering handle will slow down the machine itself for a user friendly high performance scarifying machine. The working depth of the drum with cutting/milling tools is easily adjustable and precise to the millimetre. It comes equipped as standard with a complete drum with cutters.

Precise height adjustment

The working depth of the drum is easily adjustable, this means no underground deterioration. Quick lifting/lowering of the milling drum mechanism.

Centred down force

This scarifier is built so that the weight of the machine is centered in order to create a maximum down force on the rotating drum.

Braking system

During scarifying, the machine slows down itself. The brake force can be changed quite easily with the handle on steering.

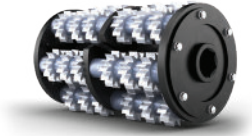
Literal drum loading

This machine is especially designed so that the drum can be removed from the machine from the side without having to move the machine.

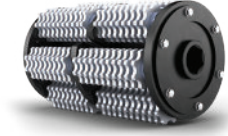
FEATURES

- Braking system
- Centred down force
- Precise height adjustment
- Literal drum loading

ACCESSORIES



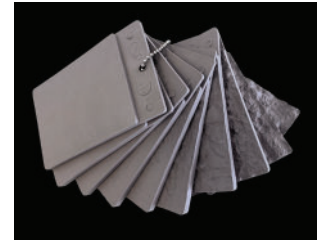
533 5190-01



533 5192-01



ICRI PROFILE CONCRETE SET
546 2169-01



ICRI PROFILE PLASTIC CHIPSET
546 2169-02

