



Husqvarna BMP 4000RC

BMP 4000RC is a heavy duty remote controlled milling and sawing (shaving) machine ideally suited for large-sized milling and sawing applications, for example road construction and industrial flooring. BMP 4000RC is a multifunctional machine. By changing the hydraulic motor you can easily swap the milling and the sawing technology. It has a double, hydraulic micrometric adjustment to set the working depth, to work very precisely and eliminate the risk of underground deterioration. Due to its increased weight, it allows you to generate more efficient and precise sawing and milling actions.

Efficient dust management

This machine is equipped with a large dust hose connection of 150 mm diameter for minimised dust exposure on the site.

Machine levelled automatically

This machine can be equipped with a laser system that keeps the machine levelled automatically. It also tracks the gradient of the flooring on a user friendly screen.

Precise height adjustment

Both hydraulic cylinders have a depth sensor indicator for precise height adjustment while working. In addition, a display gives information on height adjustment and other relevant data.

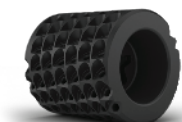
Remote-controlled machine

This machine is a remote-controlled scarifier made for the toughest scarifying applications.

FEATURES

- Precise height adjustment
- Machine levelled automatically
- Efficient dust management
- Remote-controlled machine

ACCESSORIES



DRUM WITH SHAFTS
534 82 00-01



DRUM CHANGING KIT
533 66 08-01



NAKED DRUMS
533 19 66-01



DRUM CHANGING KIT
533 86 76-01



MILLING PICK CHANGING TOOL
534 75 56-01



WATER SYSTEM
533 09 28-01



DRUM WITH SHAFTS
534 82 01-01



AUTOMATIC LASER LEVELLING
SYSTEM
533 44 23-01

WHEEL CUTTERS
533 12 77-01

